

BLOOMFIELDS WELCH

Management

Garden Studios
71-75 Shelton Street
London
WC2H 9JQ
Phone: +44 (0)20 7866 8181
Email: info@bloomfieldswelch.com
Website: www.bloomfieldswelch.com

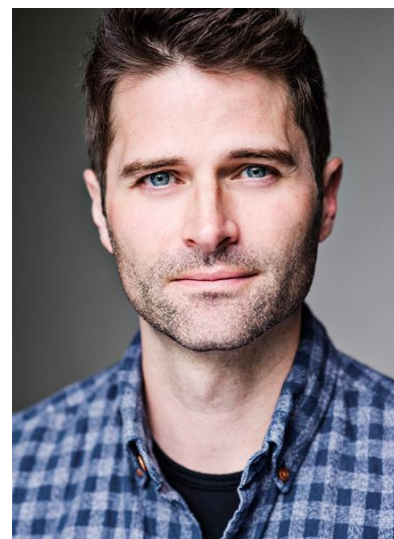


Photo: Ruth Crafer

Charles Hagerty

Location:	London	Other:	AEA
Height:	5'9" (175cm)	Eye Colour:	Blue
Weight:	11st. 6lb. (73kg)	Hair Colour:	Dark Brown
Playing Age:	31 - 40 years	Hair Length:	Short
Appearance:	White		

Stage
Stage, Sandor, GRAND HOTEL, Southwark Playhouse, Thom Southerland
Stage, Ensemble / U.S Josh, IF/THEN - ORIGINAL BROADWAY CAST, Richard Rodgers Theatre, New York, Michael Greif
Stage, Marvin Hamlisch/Charley, A CLASS ACT, Landor Theatre, Robert McWhir
Stage, Older Patrick, MAME, Goodspeed Opera House, Ray Roderick
Stage, Alex Dillingham, ASPECTS OF LOVE, Walnut Street Theatre, Bruce Lumpkin
Stage, Ensemble / Cover Fiyero, WICKED, No. 1 US Tour, Joe Mantello
Stage, The Boy, THE FANTASTICKS, Off-Broadway, Word Baker (Jim Cook)
Stage, Ensemble / Cover Marius, LES MISERABLES, No. 1 US Tour, John Caird (Jason Moore, Associate Director)
Stage, Ensemble / Cover Oliver, LOVE STORY, Walnut Street Theatre, Annabel Bolton
Stage, Peter / Cover Jesus, JESUS CHRIST SUPERSTAR, European Tour, Baayork Lee
Stage, Ensemble, MISS SAIGON, Walnut Street Theatre, Bruce Lumpkin
Stage, Will Parker, OKLAHOMA, The New Theatre, Dennis Hennesy
Stage, Him/Lenny, ROMANCE, ROMANCE, Cape May Stage, Peter Reynolds

Commercial
Commercial, Engineer, BRITISH GAS/ NECTAR, Hornet Inc.
Commercial, Lead, JONATHAN GREEN, Fort Productions

Accents & Dialects: (* = native)

American-East Coast, American-Midwest, American-New York, American-North East, American-Southern States, American-Standard*, American-Western States